



## Deins:meins - Tagescafé

Location #1003142 - Cafe in Nürnberg



### KAPAZITÄT

Fläche: **120 m2**

Empfohlene Anzahl an Gästen: **10 - 40**



Stehend: **40**



U-Form: **n/a**



Parlament: **n/a**



Theater: **n/a**



Block: **40**

### PREISE

**€ 80.00**



pro Stunde

**€ 500.00**



pro Tag

Minimale Buchungsgebühr (exkl. Extras):

Alle Preise exkl. MwSt.

Stornierungsbedingungen: Vollständige Erstattung der Gebühren bei Stornierung bis zu 7 Tage vor dem Event. 50% Erstattung bei Stornierung bis 24 Stunden vor dem Event.

### EXTRAS

Die folgenden Extras sind bei diesem Raum buchbar.



Kaffee und Tee  
€ 2.00



Budget Mittagessen  
€ 11.00



Nachmittagssnack  
€ 10.00



Wasser  
€ 2.00



Frühstück  
€ 10.00



Beamer und Leinwand  
€ 174.00



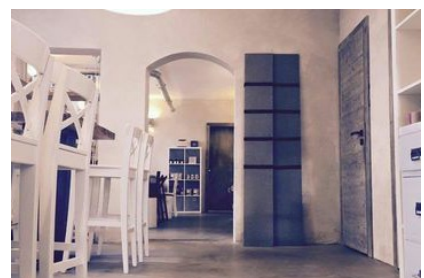
Standard Mittagessen  
€ 14.00



Softgetränke  
€ 2.50



Musikanlage  
Frei



## BESCHREIBUNG

In this event space you have the possibility to rent an urban day café as a conference room or workshop. The event location offers a pleasant, relaxed and modern atmosphere. Due to the high ceiling height of the old building, the space appears very open and thus creates a lot of space for the development of new ideas. The puristic but nevertheless cosy interior creates a modern environment, which is ideal for a creative workshop.

Companies can rent the Space to hold receptions, presentations, meetings or workshops. In addition, the café is very bright and therefore even long events can be held here without signs of fatigue. The space is ideal for young startup companies and advertising agencies, but also for companies that want to dare something new and radiate modernity.

The 120 square metre location can hold meetings with up to 40 participants. If you rent the café, then Wifi and a music system are already included in the rental price. In addition, a flipchart and a beamer with screen can be booked as additional conference equipment. Thus you have the possibility to support your event visually and to attract the attention of all participants more easily. Furthermore, if you rent the workshop room in Nuremberg, you can be provided with catering all day long from morning to evening. This includes a large selection of drinks, as well as breakfast, lunch and an afternoon snack.

The location is also a decisive factor in the choice of event when companies rent meeting rooms. This space is located on the edge of Nuremberg's Old Town, making it easy to get there. In the immediate vicinity are the subway stations Weißer Turm and Plärrer, both within 5 minutes walking distance. If you arrive by car, this is just as convenient, as parking spaces are located along the street. The Space is located near the river Pegnitz and is surrounded by various green spaces. Thus breaks can be spent effectively and relaxed in the fresh air.



Bei Spacebase wird jeder Workshop von einem unserer Experten betreut, der dir dabei hilft, deine Idee umzusetzen. Wenn du schon vorher Hilfe benötigst, kontaktiere uns gerne. Falls Du Hilfe benötigst, setze Dich bitte mit uns in Verbindung:

[service@spacebase.com](mailto:service@spacebase.com)